

# 2019 RENEGADE® ENDURO™ NEW

## PACKAGE HIGHLIGHTS

- Rotax® 850 E-TEC®, 600R E-TEC®, 900 ACE™ Turbo and 900 ACE™ engines
- RAS™ 3 front suspension
- REV® Gen4 platform with wide-design bodywork
- pDrive™ clutch
- Heated trail seat with 7 L / 1.85 US gal of storage
- rMotion™ with Air Ride rear suspension
- Heated visor outlet
- 15 x 137 x 1.25 in. Ice Ripper XT track
- Adjustable Pilot™ TS Skis
- Brembo brake with braided stainless-steel brake line
- RER™ electronic reverse (E-TEC® engines) / Electro-mechanic reverse (ACE™ engines)
- Multifunction digital gauge with display
- Ergo-Step side panels
- RF D.E.S.S.™ key
- Warm glove box with 4 L / 1 US gal of storage
- Open toe-hold

## EXTRA HIGHLIGHTS

- ACE™ engines**
- iTC™ Engine mapping modes (Standard, Sport or ECO®)
  - Reversible throttle lever (thumb or finger activated)
  - Engine oil cooler

Renegade®  
ENDURO™  
600R E-TEC®  
shown



Renegade®  
ENDURO™  
900 ACE™  
TURBO shown



ROTAX® ENGINE	850 E-TEC®	600R E-TEC®	900 ACE™ TURBO	900 ACE™
Engine details	Liquid-cooled, eRAVE™	Liquid-cooled, eRAVE™	Liquid-cooled, four-stroke D.O.H.C., dry sump, turbocharged	Liquid-cooled, four-stroke D.O.H.C., dry sump
Cylinders	2	2	3	3
Displacement	849 cc / 51.9 in. <sup>3</sup>	599.4 cc / 36.6 in. <sup>3</sup>	899 cc / 54.9 in. <sup>3</sup>	899 cc / 54.9 in. <sup>3</sup>
Bore	82 mm / 3.2 in.	72.3 mm / 2.85 in.	74 mm / 2.9 in.	74 mm / 2.9 in.
Stroke	80.4 mm / 3.2 in.	73 mm / 2.87 in.	69.7 mm / 2.7 in.	69.7 mm / 2.7 in.
Maximum engine speed	7,900 RPM	8,100 RPM	7,750 RPM	7,250 RPM
Carburation	E-TEC direct injection with additional booster injectors	E-TEC direct injection	EFI	EFI
Recommended fuel type	Premium unleaded	Premium unleaded	Premium unleaded	Regular unleaded
Minimum octane	91	91	91	87
Fuel tank	36 L / 9.5 US gal	36 L / 9.5 US gal	36 L / 9.5 US gal	36 L / 9.5 US gal
Oil tank capacity	3.4 L / 3.6 qt	3.4 L / 3.6 qt	3.3 L / 3.5 qt	3.3 L / 3.5 qt

## COLOR

- Lava Red / Black 
- Black 

## DIMENSIONS

Vehicle overall length	3,014 mm / 118.7 in.
Vehicle overall width	1,217 mm / 47.9 in.
Vehicle overall height	1,331 mm / 52.4 in.
Ski stance	1,077 mm / 42.4 in.
Ski overall length	1,066 mm / 42 in.
Track nominal width	381 mm / 15 in.
Track nominal length	3,487 mm / 137 in.
Track profile height	31.8 mm / 1.25 in. Ice Ripper XT

## SUSPENSION

Front suspension	RAS™ 3
Front shock	HPG™ Plus
Front suspension max. travel	220 mm / 8.7 in.
Rear suspension	rMotion™
Center shock	HPG™
Rear shock	Air Ride
Rear suspension max. travel	270 mm / 10.6 in.

## POWERTRAIN

Drive clutch type	pDrive™ with clickers	pDrive™	pDrive™	pDrive™ with slider shoes
Driven clutch type	QRS	QRS	QRS	QRS
Engagement	3,600 RPM	3,400 RPM	2,200 RPM	2,200 RPM
Small sprocket number of teeth	25	23	25	24
Large sprocket number of teeth	45	45	45	49
Drive sprocket number of teeth	8	8	8	8
Drive sprocket diameter	183 mm / 7.2 in.	183 mm / 7.2 in.	183 mm / 7.2 in.	183 mm / 7.2 in.
Brake system	Brembo brake with stainless-steel braided brake line	Brembo brake with stainless-steel braided brake line	Brembo brake with stainless-steel braided brake line	Brembo brake with stainless-steel braided brake line

<b>DRY WEIGHT</b>	235 kg / 518 lb	232 kg / 511 lb	252 kg / 555 lb	240 kg / 529 lb
-------------------	-----------------	-----------------	-----------------	-----------------

## FEATURES

Frame	REV® Gen4	Riser block height	120 mm / 4.7 in.	Mirrors	Optional
Bodywork	Wide design	Starter	Electric	Windshield	430 mm / 17 in.
Skis	Pilot™ TS	Reverse	RER™ (E-TEC® engines) Electro-mechanic (ACE™ engines)	Runner	Adjustable blade 1/4
Seating	Trail heated with storage	Heated throttle lever/ grips	Standard	Carbide configuration	102 mm / 4 in. at 90°
Handlebar	U-shaped aluminum with J-hooks	Gauge	Multifunction	Hitch	Optional

## ALL ENGINES

RENEGADE® ENDURO™



Renegade® ENDURO 900 ACE™ TURBO shown



Renegade® ENDURO 850 E-TEC® shown

## FEATURE HIGHLIGHTS



### Rotax® 900 ACE™ Turbo engine

With a Rotax-built turbocharger specifically designed for the 900 ACE engine, riders get the technology they love with the reliable, powerful performance they demand in one advanced engine package.



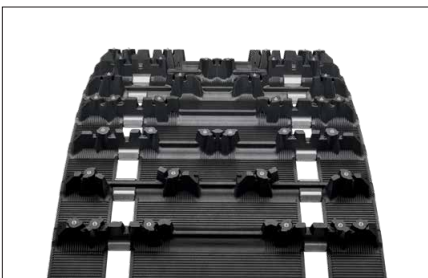
### Air Ride rear suspension

Tailors the ride for load or trail conditions via a rear air spring and an onboard compressor. Five preload settings are selectable on-the-fly via a handlebar rocker switch.



### Adjustable Pilot™ TS skis

Radical concept enables the rider to literally dial in the amount of ski bite for conditions and riding style in seconds. A knob adjacent to the ski leg raises or lowers the ski runner – fully extended for very aggressive bite. There are 20 settings over a .5 in. / 12.5 mm range.



### 1.25 in. Ice Ripper XT track

A derivative of the RipSaw® track with carbide studs embedded in track lugs for added grip in icy conditions.



### Heated trail seat with storage

Narrow at the front for easier rider movement during aggressive rides. Wider and flat at the back for improved comfort over the long hauls. 1.85 gal (7 L) rear storage.

## GAUGE FEATURES

Speedometer	Standard
Tachometer	Standard
Fuel	Standard
Engine temperature	Standard

**ski-doo®**

